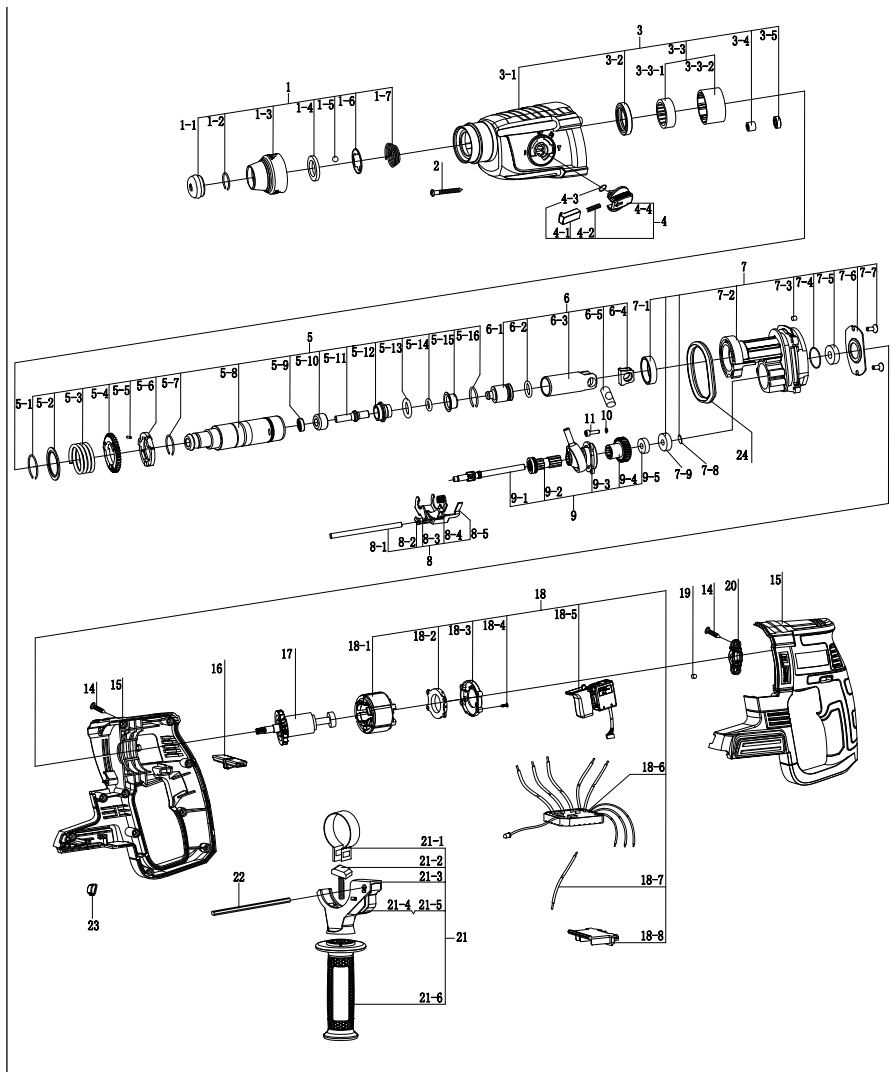


EXPLODED VIEW and SPARE PARTS LIST of RDP-RH20



NO	English Description	NO	English Description
1	Protective sleeve assy	7-3	Oil core
1-1	Protective cap	7-4	O-ring
1-2	Snap ring	7-5	Bearing 609
1-3	Protective sleeve	7-6	609 End shield
1-4	Thrust ring	7-7	M4×10 Screw
1-5	Ball Ø7.14	7-8	Washer
1-6	Holding plate	7-9	627 Ball bearing
1-7	Compression spring	8	Gear shift assy
2	ST4.8×35 Screw	8-1	Gear shift shaft
3	Gear housing assy	8-2	Shift plate 1
3-1	Gear housing	8-3	shift iron plate
3-2	Oil seal 41×7×30	8-4	spring
3-3	Bearing sleeve assy	8-5	Shift plate 2
3-3-1	Needle sleeve HK3012	9	Toothed shaft Assy
3-3-2	Bearing sleeve	9-1	Toothed shaft
3-4	Needle sleeve HK0608	9-2	Clutch assy
3-5	628/6 Ball bearing	9-3	Wobble bearing
4	Selector knob assy	9-4	Cylindrical gear
4-1	Selector knob	9-5	607 Ball bearing
4-2	Compression spring	10	washer φ4
4-3	O-ring	11	screw M4x12
4-4	Selector knob	14	ST3.9×16 Screw
5	Joint sleeve assy	15	Motor Housing
5-1	Snap ring	16	Reverse Button
5-2	Supporting disc	17	Rotor
5-3	Compression spring	18	Stator Assy
5-4	Big gear	18-1	Stator
5-5	Straight pin	18-2	Wiring box
5-6	Catch disc	18-3	upper cover
5-7	O-ring	18-4	ST2.2×10 Screw
5-8	Ratchet sleeve	18-5	Switch
5-9	Oil seal 16×5×8.2	18-6	PCB assembly
5-10	Thrush Ring	18-7	Connecting cable 260
5-11	Impact Bolt	18-8	Patch panel
5-12	Guide bushing	19	Rubber particle
5-13	O-ring	20	Bearing plate
5-14	O-ring	21	Auxiliary handle assy
5-15	Damping bushing	21-1	Clamp Band
5-16	Snap ring	21-2	T-Bolt
6	Piston assy	21-3	Clamp Holder
6-1	Striker	21-4	Clamp
6-2	O-ring	21-5	Spring
6-3	Piston	21-6	Auxiliary handle
6-4	U-shaped gasket	22	Depth gauge
6-5	Piston pin	23	lampshade
7	Intermediate flange assy	24	O-ring
7-1	Bushing		
7-2	Intermediate flange		